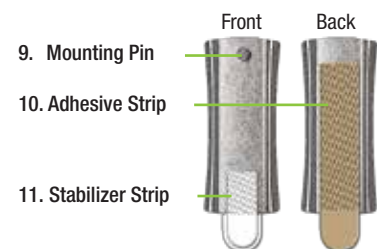


## DISPENSER



## WALL BRACKET



## MAINTENANCE

- DO NOT place the dispenser near heat, fire or electrical sources.
- DO NOT place the dispenser in standing water, under running water, in the dishwasher or in direct sunlight.
- DO NOT use product in a manner inconsistent with its labeling.
- DO NOT place or install where it can fall and damage property.
- DO NOT place where it can leak and damage surfaces.
- Keep out of reach of children and pets.
- Suitable for placement in safe areas.
- We are not liable for damage or injury caused by incorrect assembly or installation.
- If the dispenser requires cleaning, switch it off, then wipe the dispenser with a damp, non-abrasive cloth and dry thoroughly. Ensure the lens under the nozzle is free from build-up.
- Batteries - mercury/lead/cadmium

## TROUBLESHOOTING

If the dispenser does not turn on:

- Check that the batteries are inserted in the correct orientation.

If the dispenser does not dispense properly or does not dispense at all:

- Ensure hand is placed between the nozzle and the sensor.
- Switch the dispenser off. Clean as described in the section on "Maintenance."
- Check to see if dispenser is standing in water. If so, the unit may no longer function, however, try removing the battery door, wiping and drying the interior thoroughly, then re-inserting the batteries.

If liquid is dispensing unintentionally:

- The dispenser may require cleaning. Switch it off, then wipe the dispenser with a damp, non-abrasive cloth and dry thoroughly. Ensure the lens under the nozzle is free from build-up.

## CAUTION

DO NOT hold the dispenser from the front middle while it is switched on as this will activate the sensor and liquid will be dispensed onto the floor.

Before cleaning around the dispenser, turn off and remove from wall bracket to prevent liquid from unintentionally dispensing.

Use only Spritz'n Wipe refill cartridges. Other types of refills may lead to malfunction.

Questions? Comments? [spritzn.com](http://spritzn.com) 1000009 16\_04

MidCo LLC | 9604 NE 126th Avenue, Vancouver, WA 98682  
Patent Pending



## Starter Pack



- 1 Spritz'n Wipe dispensers
- 8 oz. Simply Pure cartridge
- 1 Wall Bracket
- AA Batteries Included
- FREE SHIPPING

## Refill Pack



- Simply Pure 4 Pack
- Specially formulated Cleansing Spritz
- No Artificial Dyes
- Fragrance & Alcohol Free
- FREE SHIPPING

TO ORDER  
REFILLS: [spritzn.com](http://spritzn.com)

## A HOW TO SET UP DISPENSER



1. Make sure dispenser is set to "OFF."
2. Open battery compartment on dispenser bottom.
3. Insert four AA batteries provided. Look for the + & -.



4. Close the battery compartment firmly.
5. Remove the seal from the refill cartridge cap.
6. Insert refill, cap side down, until you hear it click.

## B HOW TO SET UP ON COUNTER TOP

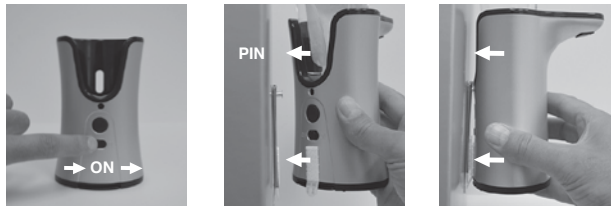


1. Insert cartridge into dispenser. (See A5-A6)
2. Place dispenser on a flat and dry surface.
3. Switch the dispenser "ON."

## C HOW TO MOUNT TO WALL



1. Clean mounting surface with, alcohol wipe provided and let dry.
2. Remove liner from wall bracket adhesive strip.
3. Orient bracket with mounting pin on top. Press firmly for 30 seconds. Wait 1 hour.



4. Switch the dispenser "ON."
5. Match up hanger hole and mounting pin.
6. Press the Spritz'n Wipe against the bracket and stabilizer velcro strip.

## D HOW TO USE DISPENSER



1. Place 5 or more sheets of toilet paper under the nozzle.
2. Rotate in a swirling motion until the liquid is dispensed.
3. Repeat as desired or if liquid is not dispensed. Wipe.

## E HOW TO REPLACE CARTRIDGE



1. If mounted to wall, lift dispenser from the bottom.
2. Turn "OFF" the dispenser.
3. Press Cartridge Eject Button. Failure to do this may cause damage to device or cartridge.



4. Hold the dispenser firmly and pull the empty cartridge up.
5. Remove the seal from the refill cartridge cap.
6. Insert refill, cap side down, until you hear it click.

## F HOW TO REMOVE BRACKET FROM WALL



Hold bracket firmly to prevent it from snapping fingers.

Do not press it against the wall. Stretch straight down along wall at least 15 inches until bracket and strip release.

NEVER pull strip toward you.

Note: This is a special adhesive system that will not damage your wall if used properly.

## G INDICATION TO CHANGE THE BATTERY



When the dispenser is running low on power, the battery level indicator light will blink for a few seconds while the dispenser tries to dispense liquid.

Turn off the dispenser and replace the batteries. (See A1-A4)